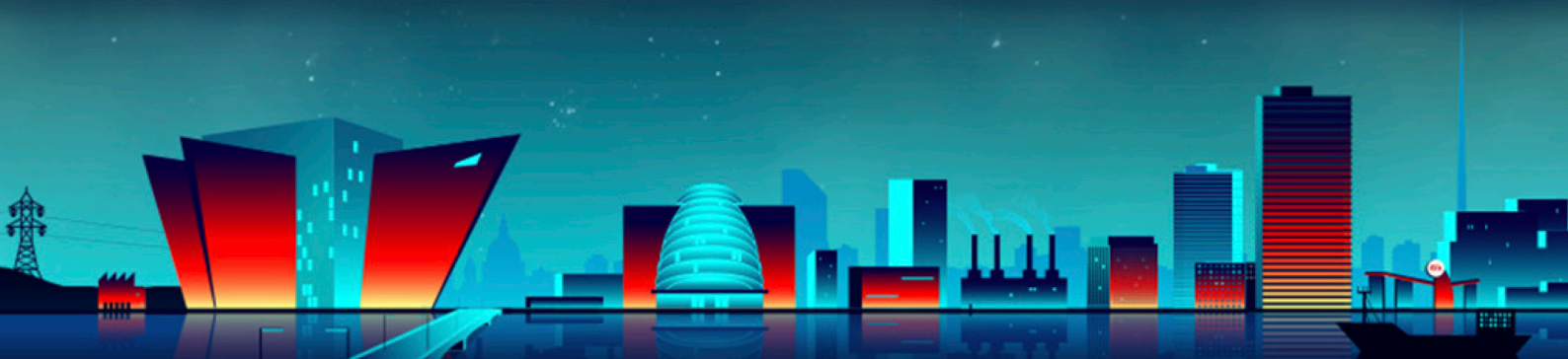




Slavery and Human Trafficking Statement Year Ended 31st March 2024

Approved by LCC Power t/a Go Power
Board of Directors
Published 2nd April 2024



Contents

1. Organisation structure
2. LCC Power Ltd t/a Go Power policy on slavery and human trafficking
3. Business and supply chain due diligence
4. Risk Assessment
5. Measuring the effectiveness of our modern slavery policy
6. Staff training
7. Enquiries



1. Organisation structure

LCC Power Ltd t/a Go Power is an independent family owned company, established in 2012 which provides energy throughout Ireland.

The company's head office is in Northern Ireland.

2. Our policy on slavery and human trafficking

LCC Power Ltd t/a Go Power has a zero-tolerance approach to modern slavery. Our policy reflects our commitment to ensuring that we conduct our business in an ethical and transparent manner.

3. Business and supply chain due diligence

LCC Power Ltd t/a Go Power conduct due diligence on all suppliers before agreeing to enter into a business contract. This due diligence includes an online search to ensure that particular organisation has never been convicted of offenses relating to modern slavery. Our modern slavery policy forms part of our contract with all suppliers and they are required to confirm that no part of their business operations contradicts this policy.

4. Risk Assessment

In order to prevent incidents of modern slavery within our business and throughout our supply chain, we have undertaken the following steps;

1. Identify, monitor and assess areas of the business most at risk from modern slavery
2. Confirm supplier compliance with the Modern Slavery Act before the commencement of trade
3. Incorporate anti-slavery and human trafficking obligations as part of our contracts
4. Provide training to employees to help achieve this policy



5. Measuring the effectiveness of our modern slavery policy

In order to assess the effectiveness of our modern slavery policy, we will establish key performance indicators to enable us to measure the effectiveness of our approach.

6. Staff Training

We regularly conduct training for all our employees so that they understand the signs of modern slavery and what to do if they suspect that it is taking place within our supply chain.

7. Enquiries

If you would like to raise any concerns in relation to our slavery and human trafficking policy please write to the following address;

LCC Power Ltd t/a Go Power
16 Churchtown Road
Cookstown
BT80 9XD

Daniel Loughran | Director

